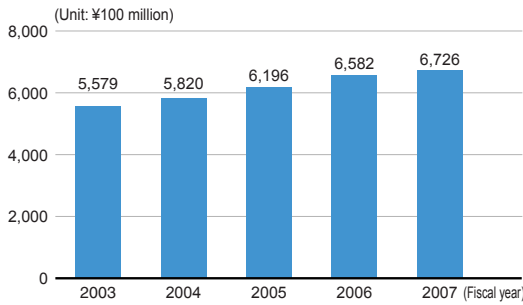
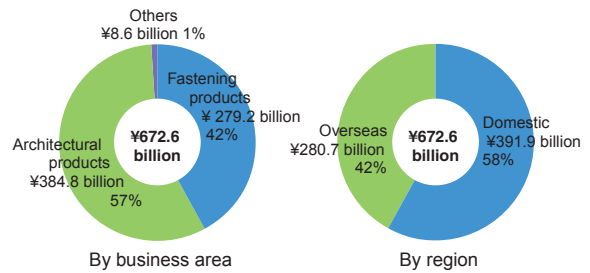


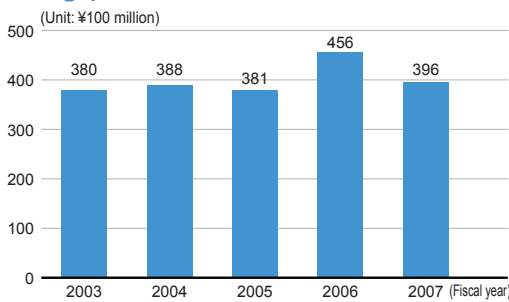
Net sales (consolidated)



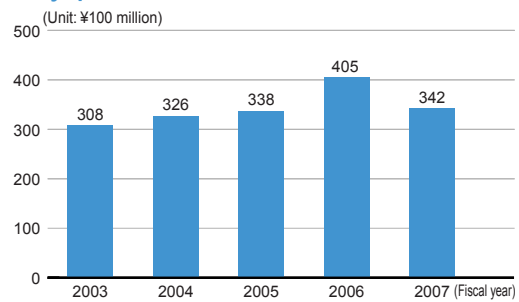
Net sales in fiscal 2007 by sector (consolidated)



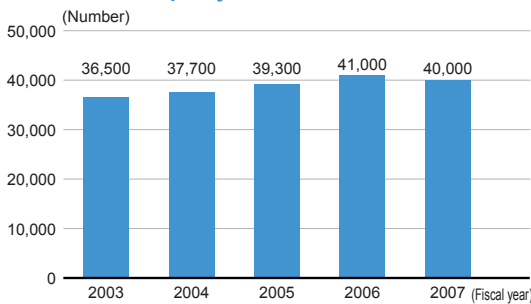
Operating profit (consolidated)



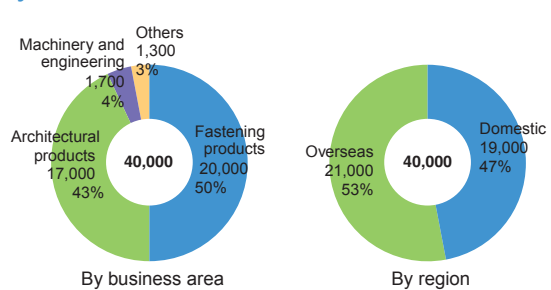
Ordinary profit (consolidated)



Number of employees (consolidated)



Employee distribution in fiscal 2007 by sector (consolidated)



Please see the following home page for additional details about YKK Group financial information.  
<http://www.ykk.co.jp/english/corporate/financial/index.html>

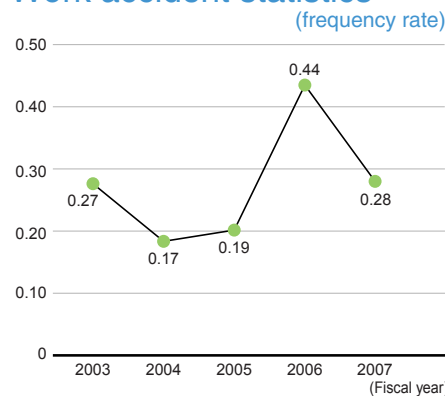
Personnel, health care, occupational safety and hygiene \* YKK Group Japanese companies

Fiscal 2007 record

(As of the end of March 2008)

Average age	40.9
Average length of employment	18.8 years
Gender composition	Men: □ 68.8% Women: □ 31.2%
Average working hours	YKK: □ 1,724 hours YKK AP: □ 1,728 hours Other: □ 1,514 hours
Number of early retirees	571
Rate of use of paid holidays	54.5%
Number of employees who took parenting leave	268
Number of employees who utilized special parenting work hours program	131
Number of employees who took nursing care leave	8
Number of employees who utilized re-entry program for retired employees	314

Work accident statistics



Health examination rate

